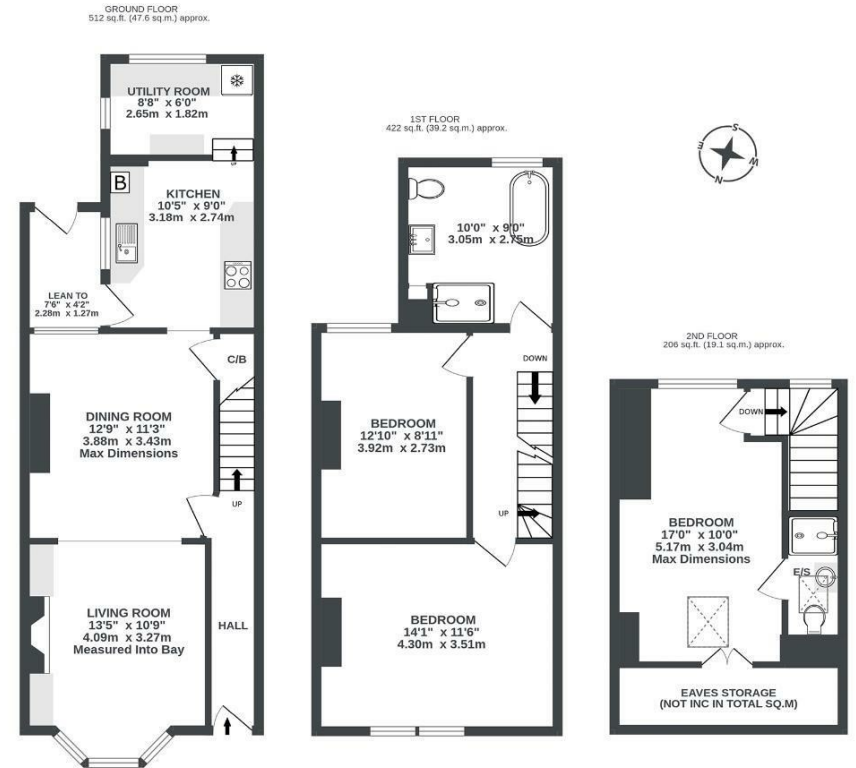


Boardwalk

Newbridge Road , BRISTOL

Newbridge Road ST ANNE'S

APPROXIMATE FLOOR AREA
105.9 SQM / 1140 SQFT



Illustrations are for reference purposes only, measurements are approximate, not to scale.

Boardwalk

Newbridge Road , BRISTOL

£

£425,000



BS4 4DJ

ZZZ

3 Bedrooms



2 Bathrooms



"We moved to Newbridge Road in 2017 and quickly fell in love with both the house and the area. Over the years, we've enjoyed restoring its character and making it a warm, welcoming home. One of our favourite parts has always been the garden. In the summer, it becomes the perfect place to host, cooking outdoors, watching the sunset and hot air balloons over the city. At the same time, it's been just as special in the quieter moments, starting the day with a coffee or picking fresh fruit for breakfast. From the very beginning, we felt the strong sense of community here. It's been lovely to see St Anne's grow over the years, with places like Bristol's Community Sauna, Lost and Grounded, The Langton and Catley's becoming part of everyday life. What we've valued most is the balance this home offers, the outdoor space, while still being only a short cycle into the city. It really has given us the best of both, city life and moments to slow down."

